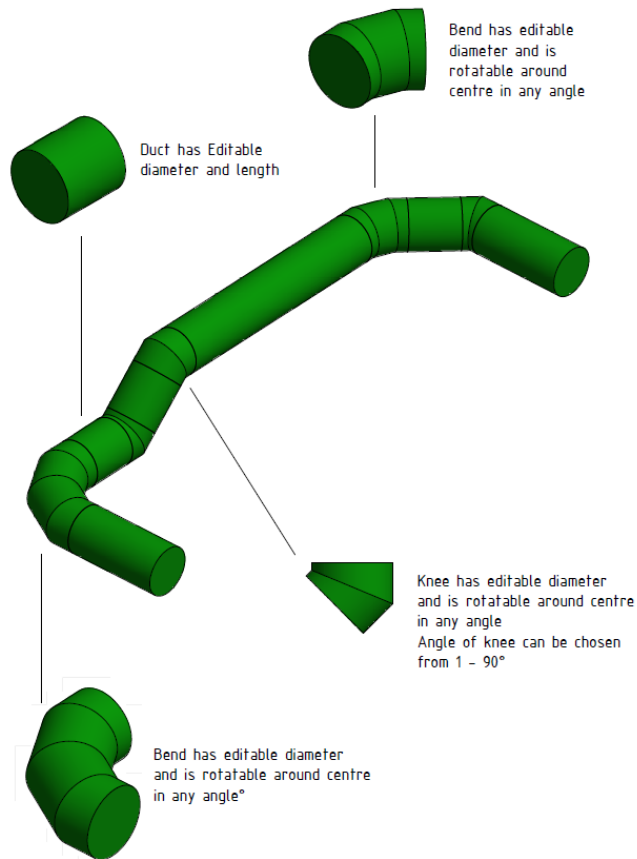




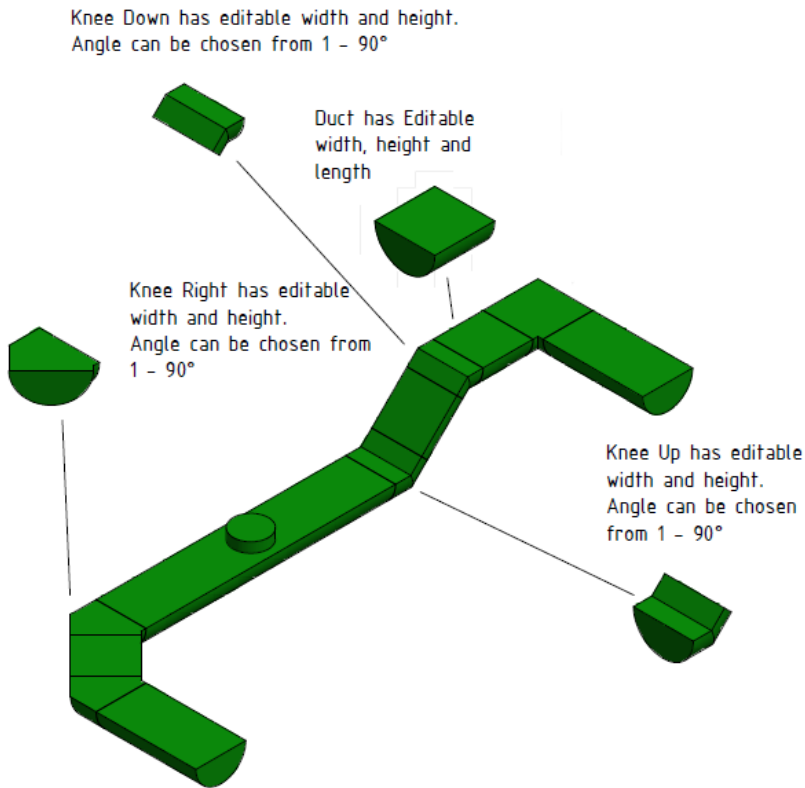
Revit components

# ∅-ducts



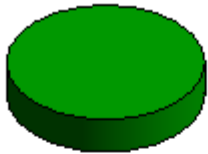
Family	Product
EuroAir - ∅-Straight	Straight ∅ duct
EuroAir - ∅-Elbow	Elbow for ∅ duct - all directions
EuroAir - ∅-Bend-90	90° bending for ∅ duct
EuroAir - ∅-Bend-45	45° bending for ∅ duct

# D-ducts



Family	Product
EuroAir - DV-Straight	Straight D duct
EuroAir -DV-Left	Elbow for D duct – in left direction
EuroAir -DV-right	Elbow for D duct – in right direction
EuroAir -DV-Up	Elbow for D duct – direction up
EuroAir -DV-Down	Elbow for D duct – direction up

# Connectors



Top connector has editable diameter and length.  
Airflow are possible to change.

Side connector has editable diameter and length.  
Airflow are possible to change.



Family	Product
EuroAir - Connector-Side	Socket on side
EuroAir - Connector-Top	Socket on top

# How to do



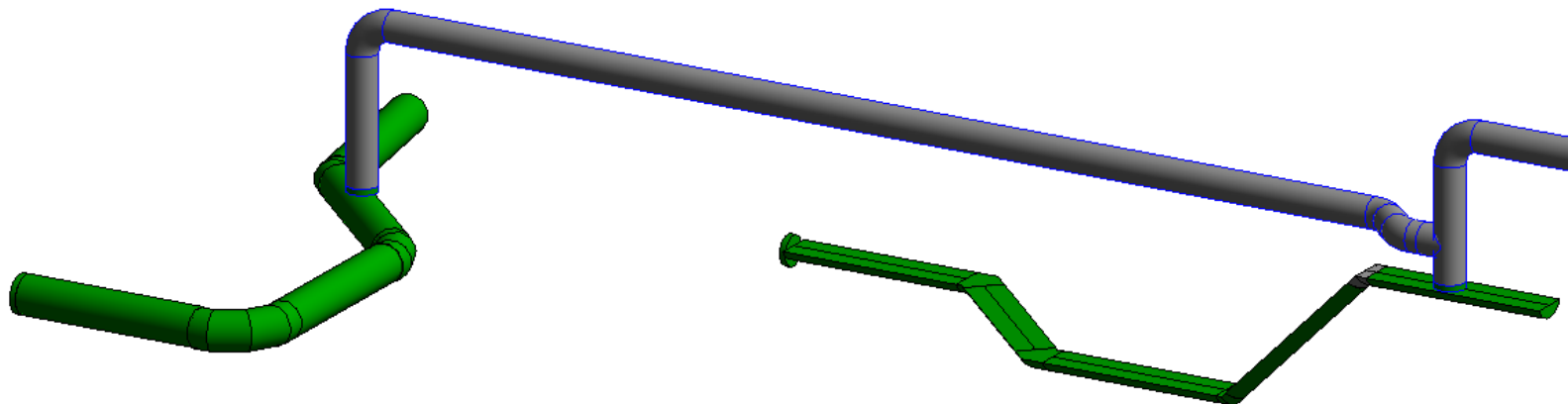
1. Save the families on your computer
2. Open a project
3. Load the families for  $\emptyset$ -ducts and/or D-ducts under **Systems - Duct fitting**
4. Load the family for the connector on side or on top under **Systems – Air Terminal**
5. Insert the connector and add the airflow
6. Insert the desired component
7. Modify the dimension and length/angel under properties
  - Length only on straight ducts
  - Angle only on elbows
8. Add the next component

# Parts list (Schedules/Quantities)



<EuroAir>

A	B	C	D	E	F	G	H
Type	Size	Duct Fabric Angle	Duct Fabric Height	Duct Fabric Length	Comments	Description	Manufacturer
EuroAir - Ø-Straight	315ø-315ø			1516			EuroAir
EuroAir - Ø-Bend-90	315ø-315ø	90.00°					EuroAir
EuroAir - Ø-Straight	315ø-315ø			1516			EuroAir
EuroAir - Ø-Bend-45	315ø-315ø	45.00°					EuroAir
EuroAir - Ø-Straight	315ø-315ø			1516			EuroAir
EuroAir - Ø-Elbow	315ø-315ø	35.00°					EuroAir
EuroAir - Ø-Straight	315ø-315ø			1516			EuroAir
EuroAir - DV-Straight	315ø-315ø		100	1500			EuroAir
EuroAir - DV-Right	315ø-315ø	45.00°	100				EuroAir
EuroAir - DV-Straight	315ø-315ø		100	1500			EuroAir
EuroAir - DV-Left	315ø-315ø	45.00°	100				EuroAir
EuroAir - DV-Straight	315ø-315ø		100	1500			EuroAir
EuroAir - DV-Up	315ø-315ø	45.00°	100				EuroAir
EuroAir - DV-Straight	315ø-315ø		100	1500			EuroAir
EuroAir - DV-Down	315ø-315ø	45.00°	100				EuroAir
EuroAir - DV-Straight	315ø-315ø		100	1500			EuroAir



# From project to installation

